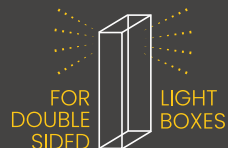


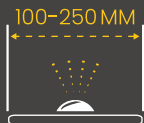
## Light-emitting diode module Duolite DS15 1,5W

### TECHNICAL INFORMATION

LED type	2835
Input	12V DC
Color temperature	6500 K
Beam angle	10 x 65°
Protection level	IP 67
Center-to-center distance	180 mm
Working temperature	-30°C + 50°C
Available colors	●
Power	<b>1,5 W</b>
Light output	<b>140 lm</b>



FOR DOUBLE SIDED LIGHT BOXES  
DESIGNED ESPECIALLY FOR EDGELIT LIGHTBOXES



BEST FOR 100-250 MM DEEP LIGHTBOXES



CRISP BRIGHT WHITE

NEW OPTICS WITH ZERO YELLOW UNDERTONE ALONG THE BOTTOM



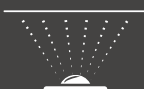
1,5W

HIGH POWER FOR EXTRA BRIGHTNESS



IP 67

DUST AND WATER PROTECTED



140lm

HIGH BRIGHTNESS 140 LM PER MODULE

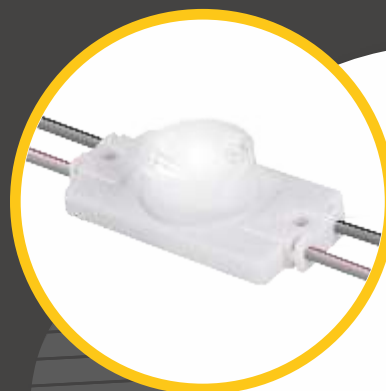


6500 K

6500K AND OTHER COLORS

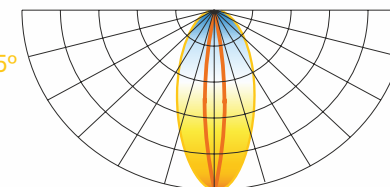


5 YEAR EXTENDED WARRANTY

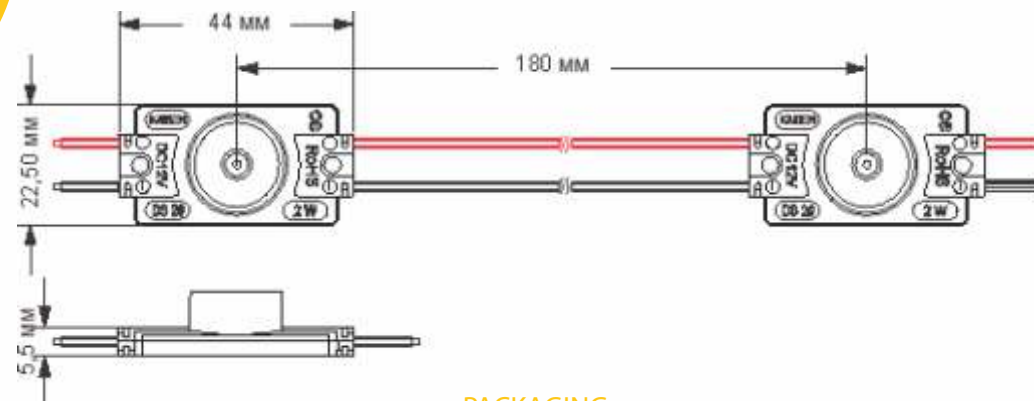


### LIGHT DISTRIBUTION GRAPH

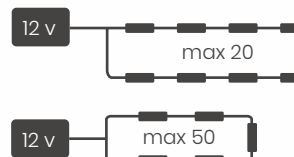
Beam angle is 10x65°



### DIMENSIONS



### CONNECTION



### PACKAGING

Packing type	Chain	Package	Box
Quantity	20 pcs	100 pcs	1600 pcs
Weight	0,22 kg	1,1 kg	17,53 kg

