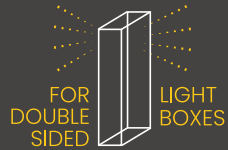
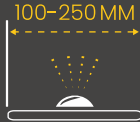


Light-emitting diode module Duolite DS20 2W



FOR DOUBLE SIDED LIGHT BOXES
DESIGNED ESPECIALLY FOR EDGELIT LIGHTBOXES



100-250 MM
BEST FOR 100-250 MM DEEP LIGHTBOXES



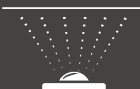
CRISP BRIGHT WHITE
NEW OPTICS WITH ZERO YELLOW UNDERTONE ALONG THE BOTTOM



2W
HIGH POWER FOR EXTRA BRIGHTNESS



IP 67
DUST AND WATER PROTECTED



200lm
HIGH BRIGHTNESS 200 LM PER MODULE



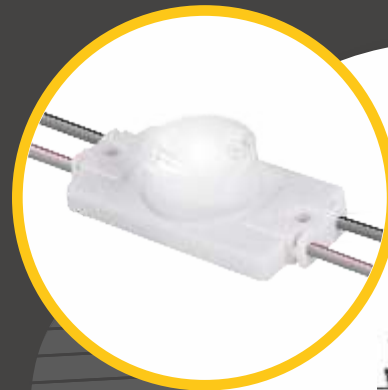
6500 K
8500K AND OTHER COLORS



5 YEAR EXTENDED WARRANTY

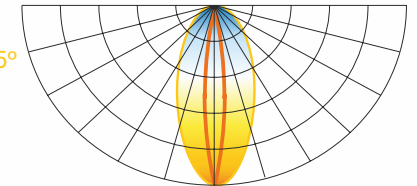
TECHNICAL INFORMATION

LED type	2835
Input	12V DC
Color temperature	6500 K
Beam angle	10 x 65°
Protection level	IP 67
Center-to-center distance	200 mm
Working temperature	-30°C + 50°C
Available colors	●
Power	2 W
Light output	200 lm

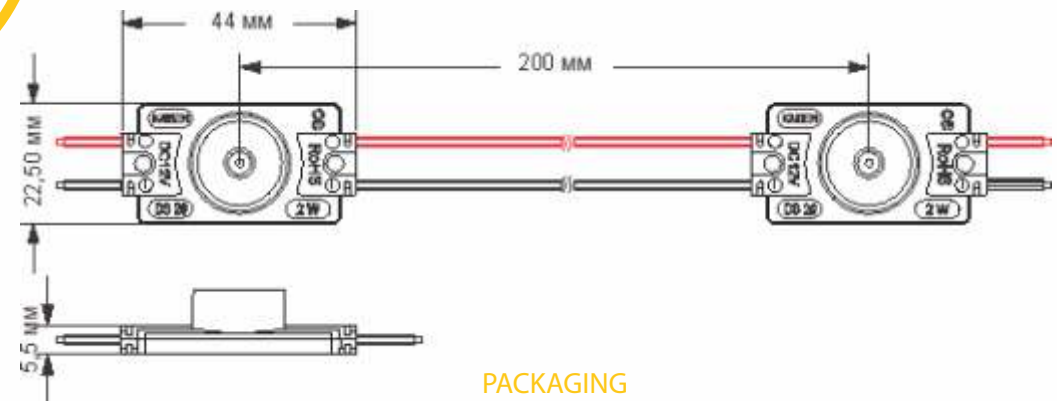


LIGHT DISTRIBUTION GRAPH

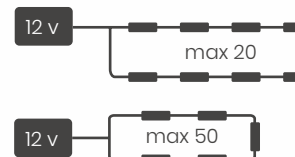
Beam angle is 10x65°



DIMENSIONS



CONNECTION



PACKAGING

Packing type	Chain	Package	Box
Quantity	20 pcs	100 pcs	1400 pcs
Weight	0,28 kg	1,42 kg	17,0 kg